

# ANIMATED TREES

## TIME REQUIRED

Approximately 4 class periods (50 minutes each).

## OBJECTIVES

Students will...

- Learn to successfully do a “V” and “Y” tree.
- Draw technically, colour, paint, and animate their tree.

## STANDARDS

- Explore the elements and principles of design.
- Develop basic skills to produce quality art.
- Learn basic concepts in art.
- Communicate basic ideas by producing art forms, such as drawings, paintings, prints, sculpture, jewelry, fibers, and ceramics.
- Know that art techniques are used in mass media.
- Make art that shows how they sometimes feel.

## ASSESSMENT

- Skill
- Effort
- Likeness to a tree and face
- Are the branches tapered at the ends and do they overlap?
- Have they coloured the tree and face in solid with appropriate colours?
- Did they use at least two colours for the sky?
- Is the grass correctly placed in the picture?





1



2



3

## VOCABULARY

Shape  
Balance  
Line  
“V” and “Y” branching  
Cartooning faces and expressions  
Colour  
Colour resist

## INTRODUCTION

Before introducing this lesson, have students practice drawing their “V” and “Y” trees on manila paper. Talk about trees and The Wizard of Oz trees that come to life and are animated. They have faces and character. Talk about cartoons and cartooning. Have students draw a face on their manila paper for practice until they achieve the feeling they want for their own character. Provide some samples of cartoon face parts as a reference for students. Make a face and ask them to tell you your emotion. Ask how trees are like people. How can you show different emotions through a look on your face?

## INSTRUCTIONS

- 1 Practice drawing trees using the letters “V” and “Y” and add faces on manila paper.
- 2 Draw final tree on white paper about 3” from the bottom.
- 3 Show students how to colour their trees in one direction just as the tree grows. There should be no white showing through the tree, so colour it solid and leave a space in the main trunk for the face.

## INSTRUCTIONS CONTINUED

**4** Students will then colour their face, ears, and lips with skin tone coloured pencils. They can also go over their eyes and lips with other colours. They should make sure they do not colour the whites of the eyes or teeth.

**5** A discussion on sky colours will be next, explaining that the sky does not always have to be blue. Students will use at least two colours to watercolour the sky. The sky should match their face's emotion and mood.

**6** Grass will then be added using a stiff cardboard with yellow and green tempera. Put the edge of cardboard in the paint and dab on the paper in fine lines just as grass would be. Make sure not to paint into the face area with the tempera.

**7** Mat and display the finished product and watch the reactions as students view the funny trees.

4



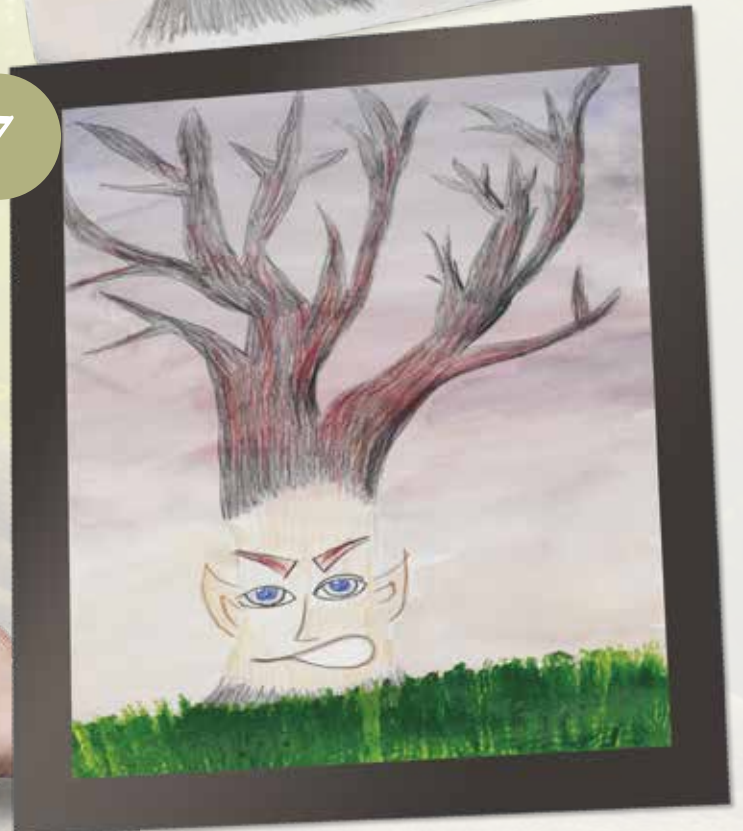
5



6



7



Since 1889  
**GENERAL'S®**



## MATERIALS LIST

- General's® Semi-Hex® Drawing Pencil Kit — [9726309](#)
- Nasco Drawing Pencils Classroom Pack — [9727144](#)
- Nasco Budget White Sulphite Drawing Paper, 500 sheets, 12" x 18", 80# weight — [9700929](#)
- Fantasia Premium Artist Colour Pencils, set of 24, (not watercolour pencils) — [9721470](#)
- Nasco Manila Drawing Paper, 500 sheets, 12" x 18", 40# weight — [9700933](#)
- Nasco Country School™ Student Grade Tempera Paint, pint bottles — [9703627C](#) Yellow and [9703627D](#) Green
- Spectrum Washable Watercolours, 12-Colour Set — [240813](#) or Nasco Country School™ Washable Watercolours, set of 10 colours, 8-oz. bottles — [9723011](#)
- Spectrum Assorted White Taklon Brushes, Set of 144 — [240715](#)
- Stancup Disposable Art Cups, pkg. of 100 — [220342](#)
- White Tag Board, pkg. of 100, 22½" x 28½" sheets (cut in half), 100# weight — [9700994B](#)

**SPECTRUM**  
EDUCATIONAL SUPPLIES

150 Pony Drive Newmarket, ON L3Y 7B6  
Telephone: 1-800-668-0600  
Online: [spectrumed.ca](http://spectrumed.ca)